

Xerox Model 3201/3231/3232/3233 Cartridge Disk System

The Xerox Model 3201/3231/3232/3233 Cartridge Disk System provides the Xerox 530 computer user with an economical, medium capacity, random access secondary storage capability having an average access time (seek and latency) of approximately 50.5 milliseconds.

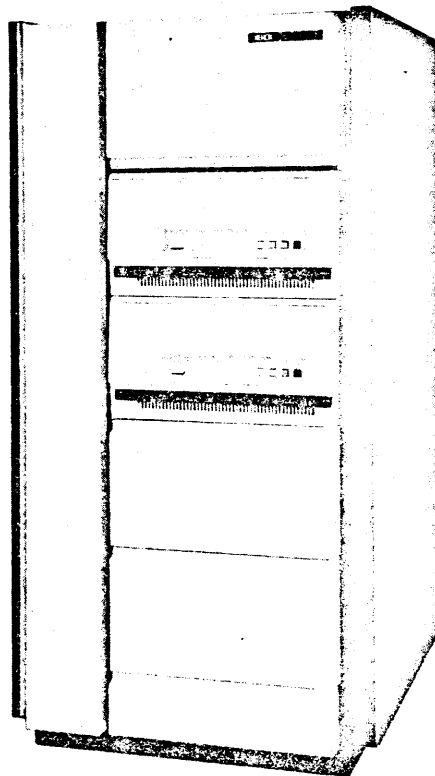
A Cartridge Disk System consists of one Model 3201 Rotating Storage Controller and from one to eight Cartridge Disk Drives.

The Model 3231 Cartridge Disk Drive has a total sectored capacity of 2.4 million bytes on one removable spindle.

Data is recorded on only one surface of the removable disk.

The Model 3232 Cartridge Disk Drive has a total sectored storage capacity of 4.9 million bytes on one removable spindle. Data is recorded on both surfaces of the removable disk.

The Model 3233 Cartridge Disk Drive has a total sectored storage capacity of 9.8 million bytes. Half of the total capacity is on a removable disk and half is on a non-removable disk. Data is recorded on all four surfaces.



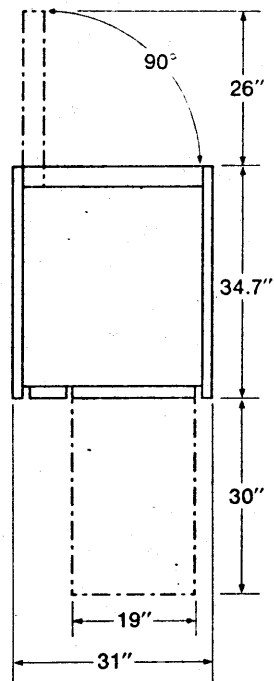
Xerox Model 3201/3231/3232/3233 Cartridge Disk System

Up to eight drives can be attached to a controller for a total storage capacity of up to 73.5 million bytes per controller. Dual Access is optionally available, as is a Controller Expansion Option which is required if five or more disks are to be supported by a single controller.

The Model 3201 also serves as the controller for Xerox Model 3203/3204 RADs. Cartridge Disks and RADs may be intermixed in any combination on a single controller to a maximum of eight units. If the eighth unit is a Cartridge Disk, access is limited to the removable cartridge only. Up to four Cartridge Disk and/or RAD units may be mounted in each cabinet.

Specifications

Recording Format	256 bytes/sector 24 sectors/track 400 tracks/surface (+8 alternates)
Drive Capacity (sectored)	
Model 3231	2.4 million bytes (removable)
Model 3232	4.9 million bytes (removable)
Model 3233	9.8 million bytes (4.9 million bytes fixed and 4.9 million bytes removable)
Nominal Access Time	
Seek	38 msec. average (12-75 msec.)
Rotational Latency	12.5 msec. average (0-25 msec.)
Transfer Rates	
Instantaneous (per sector)	312K bytes/sec.
Average (multiple sectors)	246K bytes/sec.
Cable Lengths (3201 to drives)	
4 drives or less, single access	20 ft. maximum
5 drives or more, or dual access	100 ft. maximum
Physical Dimensions (approx.)	
Cartridge Disk Units	
Height	10.3 in.
Width	19 in.
Depth	28.5 in.
Weight	160 lbs.
Cabinet (up to four units)	
Height	63.4 in.
Width	31 in.
Depth	34.7 in.
Controller	
Space is provided within the host mainframe.	



FRONT

NOTE: All dimensions are approximate.